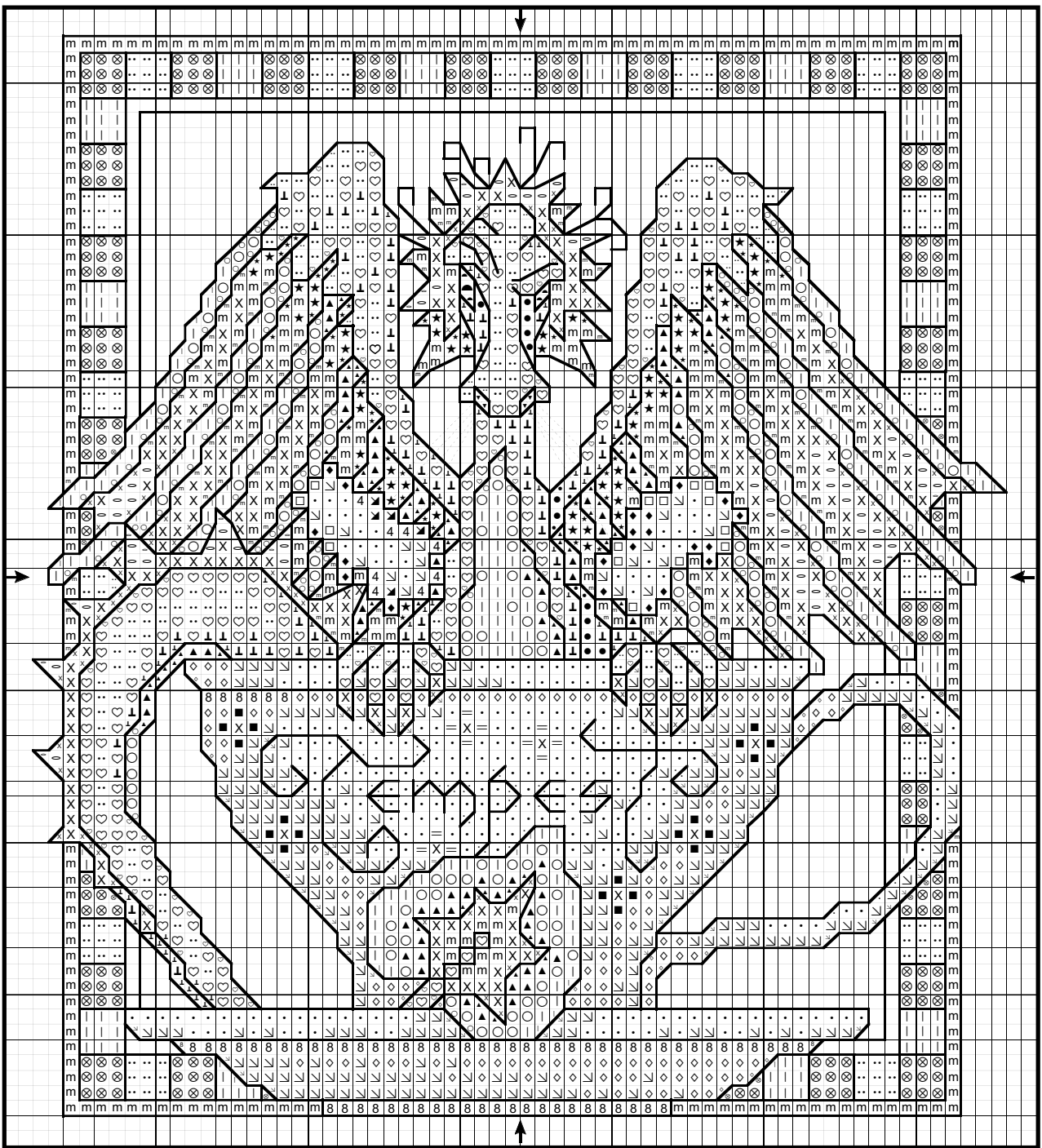


TW Designworks: "Tempest" (in a Teacup) by Teresa Wentzler



Stitch "Tempest" to remind yourself (or someone else?!) how silly it is to make a big fuss about nothing! He will hang in a prominent place in my studio, to help me to remember to focus on what's important in life and not to worry (too much) about the rest.

"Tempest"(in a Teacup)

	DMC	Anchor	
	341	117	blue-violet, lt.
	3042	870	antique violet, lt.
○	340	118	blue-violet, med.
	3041	872	antique violet, med.
▲	3740	873	antique violet, dk.
	3746	1030	blue-violet, dk.
..	353	8	peach flesh
♡	352	9	coral, lt.
	758	882	terra cotta, v. lt.
⊥	351	10	coral
	3778	1013	terra cotta, lt.
•	350	11	coral, med.
	356	5975	terra cotta, med.
-	677	886	old gold, v. lt.
X	676	891	old gold, lt.
⊗	676	891	old gold, lt.
	677	886	old gold, v. lt.
m	729	890	old gold, med.
★	680	901	old gold, dk.
.	blanc	01	white
↘	762	234	pearl gray, v. lt.
◇	415	398	pearl gray
	3743	869	antique violet, v. lt.
8	318	399	steel gray, lt.
	3042	870	antique violet, lt.
▼	3041	872	antique violet, med.
▲	3740	873	antique violet, dk.
=	341	117	blue-violet, lt.
■	340	118	blue-violet, med.
bs only	414	235	steel gray, dk.
bs only	355	1014	terra cotta, dk.
bs only	869	944	hazelnut, v. dk.

The following symbols are stitched with the bottom leg as the color(s) listed, and are crossed (top leg) using two strands DMC 762.

□	340	118	blue-violet, med.
	3041	872	antique violet, med.
4	3740	873	antique violet, dk.
	3746	1030	blue-violet, dk.
◆	729	890	old gold, med.
⚡	680	901	old gold, dk.

General Information:

Stitch count: 64W X 71H

Model was stitched on 28-count antique white Lugana.

Instructions:

Cross stitch over-two using two strands of floss. When two floss colors are bracketed together, use one strand of each color.

Backstitch using one strand of floss.

Backstitching Instructions:

414: teacup and saucer (except lettering)

869: all gold on dragon, 3740: all blue-purple, including the "spines" in the wings

355: all salmon

3746: "Tempest" lettering

680: all of border; tendrils on dragon's head

762: straight stitch "steam" coming from dragons' nostrils (indicated by fine dotted lines)

Note: Do not backstitch the steam "clouds": the backstitching lines are to be used as a stitching "placement aid" only.

Dear Stitcher,

I hope you'll enjoy stitching "Tempest"...I just couldn't resist designing him once the image popped into my head!

As a variation, you might want to add some metallics to the design or maybe add a phrase... something like: "Nobody takes me seriously?!?"

I hope you have as much fun stitching him as I had designing him!

Teresa

Floss List (DMC):	Floss List (Anchor):
white	01
340	8
318	9
341	10
350	11
351	117
352	118
353	234
355	235
356	398
414	399
415	869
676	870
677	872
680	873
729	882
758	886
762	890
869	891
3041	901
3042	944
3740	1013
3743	1014
3746	1030
3778	5975

PLEASE NOTE!! This is a "free" chart, which means you may photocopy it. You may stitch it as many times as you'd like. Shopowners may give it to customers free of charge. However, since TW Designworks retains ownership of the copyright, **you may not sell this chart, or profit from it in any way!** On behalf of needlework designers, I thank you for your support of copyright law! Enjoy! -Teresa Wentzler