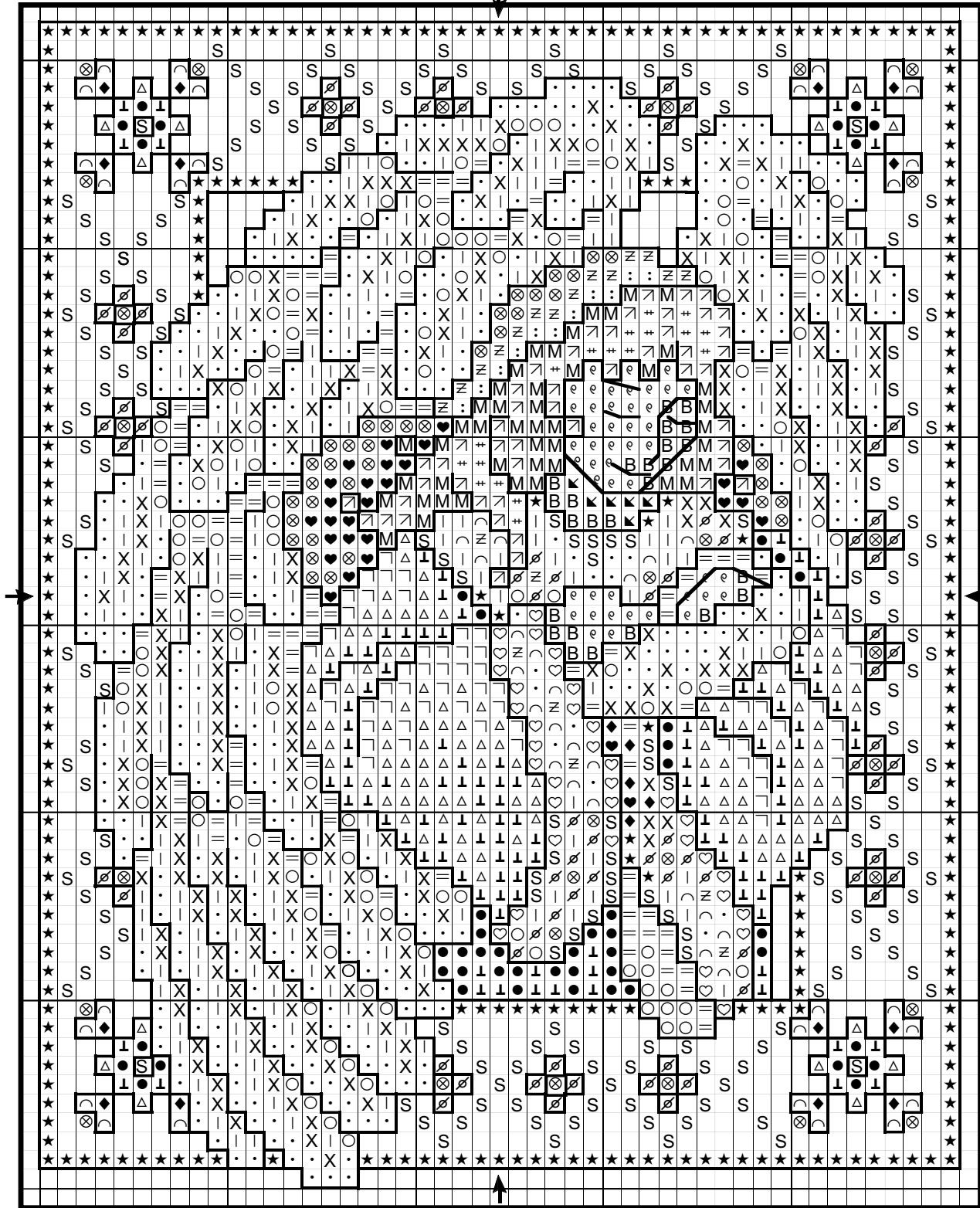


# "Jeanne Love's Angel"

designed by Teresa Wentzler of TW Designworks for *The Angel Quilt Project*



This design is named in memory of **Jeanne Love**, who joined the Angel Quilt Project in April of 2000, shortly after it began. Jeanne passed away on January 1, 2002. (See dedication on page 2)  
Please visit The Angel Quilt Project on the Web at: [www.aqp-us.org](http://www.aqp-us.org)

## "Jeanne Love's Angel"

designed for the

### Angel Quilt Project

by Teresa Wentzler of TW Designworks

	DMC	Anchor	
○	3743	869	antique violet, v. lt.
=	3042	870	antique violet, lt.
♡	677	886	old gold, v. lt.
S	676	891	old gold, lt.
★	729	890	old gold, med.
·	blanc	01	white
	762	234	pearl gray, v. lt.
X	415	398	pearl gray
∩	523	858	fern green, lt.
∕	522	859	fern green
◆	3363	860	pine green, med.
♥	3726	1018	mauve, dk.
⊗	316	1017	mauve, med.
≧	3727	1016	mauve, lt.
:	778	968	mauve, v. lt.
●	792	177	cornflower, dk.
⊥	793	939	cornflower, med.
△	794	117	cornflower, lt.
∟	3747	120	blue-violet, v. lt.
M	611	898	drab brown, dk.
↗	612	832	drab brown, med.
+	613	831	drab brown, lt.
e	3774	778	flesh, v. lt.
B	950	4146	flesh, lt.
⚡	3773	1008	flesh, med.
bs only	414	235	steel grey, dk.
bs only	420	374	hazelnut, dk.
bs only	315	1019	mauve, dk.
bs only	158	178	cornflower, m. v. dk.
bs only	3362	861	pine green, dk.
bs only	610	889	drab brown, v. dk.

**PLEASE NOTE!!** This is a "complimentary" chart, which means you may photocopy it. You may stitch it as many times as you'd like. Shopowners may give it to customers free of charge. However, since TW Designworks retains ownership of the copyright, **you may not sell this chart, or profit from it in any way!** On behalf of needlework designers, I thank you for your support of copyright law. Enjoy!  
-Teresa Wentzler

## General Information:

Stitch count: 49W X 62H

Model is stitched on 28-count ivory Lugana.

The original model was beautifully stitched by Lindsay Latham. Thank you, Lindsay!

## Instructions:

Cross stitch over-two using two strands of floss. When two floss colors are bracketed together, use one strand of each color.

Backstitch using one strand of floss.

Complete all cross stitch first, then backstitch as follows:

414: wings, baby's blanket

420: all gold

158: all blue

315: all mauve

610: hair, facial features, hand, baby's head

3362: green in border

## Floss List

(DMC):

white	762	01	869
158	778	117	870
315	792	120	886
316	793	177	889
414	794	178	890
415	950	234	891
420	3042	235	898
522	3362	374	939
523	3363	398	968
610	3726	778	1008
611	3727	831	1016
612	3743	832	1017
613	3747	858	1018
676	3773	859	1019
677	3774	860	4146
729		861	

## Floss List

(Anchor):

For more information about The Angel Quilt Project, please visit: <http://www.aqp-us.org>

Post Office Box 5421 • Greenville • Mississippi 38704-5421 • (662) 332-4937  
E-mail: [Angelaafghanproj@aol.com](mailto:Angelaafghanproj@aol.com)

The organization is a non-profit, tax-deductible group which is dedicated to stitching panels which are finished into small quilts. The quilts are provided to hospitals around the world with intensive care units for premature infants. Quilts are also given to young children (under age 10) treated at Children's Cancer Clinics and Regional Burn Centers.

## Dedication:

Jeanne Love was one of the first members of the Angel Quilt Project (when we were still called the Angel Afghan Project). She was a chart distributor for the project, helping to send out charts to the new members as they joined the project. In January of 2002, I learned of her death, which totally shocked me, as well as the rest of the project members who knew her. She was a wife and mother of 3, with a 4th expected. It's my understanding that she passed away during childbirth, with the child also passing away. Jeanne worked hard on the project and her dedication was one of her best assets and we all miss her. When I contacted Teresa about honoring Jeanne with naming her design for her, I was pleased to get a confirmation from her that she'd gladly do this for us. Our most popular angel, Judy's Angel (which is the 2000 Christmas Angel from Marilyn Levitt-Imblum) is the first angel named in honor of a member who passed away after dedicating part of her life to the project. I want to thank Teresa Wentzler for honoring Jeanne with this beautiful angel and I hope, when you stitch her, that you'll keep Jeanne's family in your prayers.

James Farmer, Founder  
The Angel Quilt Project